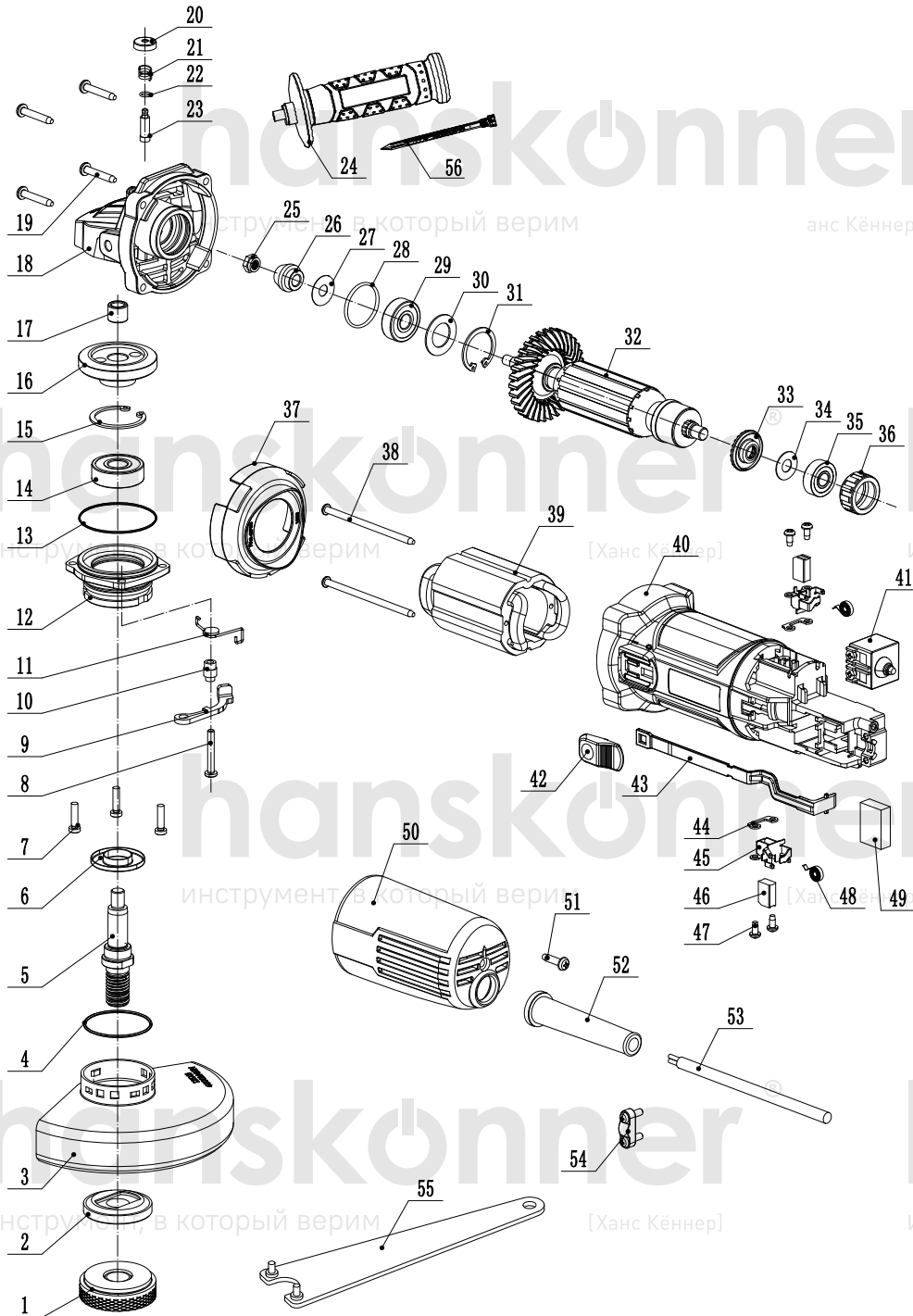


HAG1011



NO.	DESCRIPTION	NO.	DESCRIPTION
1	OUTER FLANGE	29	BEARING 629
2	INNER FLANGE	30	BEARING WASHER
3	WHEEL GUARD	31	CIRCLIP FOR HOLE
4	O RING	32	ARMATURE
5	SPINDLE	33	DUSTPROOF RING
6	DUSTPROOF COVER	34	BEARING WASHER
7	SCREW M4X16	35	BEARING 608
8	SCREW M4X28	36	BEARING SLEEVE
9	QUICK-CHANGE LEVER	37	WINDSHIELD
10	STEEL JICKET	38	SCREW ST4X75
11	QUICK-CHANGE TORSION SPRING	39	STATOR
12	FRONT COVER	40	HOUSING
13	O RING	41	SWITCH
14	BEARING 6201	42	PUSH BLOCK
15	CIRCLIP FOR HOLE	43	PUSHOVER BAR
16	BIG GEAR	44	INSULATION STRIP
17	NEEDLE BEARING HK0810	45	BRUSH HOLDER
18	GEAR BOX	46	CARBON BRUSH
19	SCREW ST4.2X22	47	SCREW ST3X7.5
20	SELFLOCKING CAP	48	COIL SPRING
21	SELFLOCKING SPRING	49	CAPACITANCE
22	O RING	50	REAR COVER
23	SELFLOCKING PIN	51	SCREW ST4X14
24	SIDE HANDLE	52	PROTECTOR
25	NUT M6	53	CORD CLAMP
26	PINION	54	CABLE
27	BEARING WASHER	55	WRENCH
28	O RING	56	SCRIBER